



## TLU Series

### TRACK LIFTER UNDERCUTTER

#### The productive, single solution for lifting and undercutting.

The Loram Track Lifter Undercutter (TLU) offers industry-leading waste-only undercutting. With the capability to lift track 12 inches, and typical undercutting depth of 10 inches per pass, the TLU facilitates the creation of a new sub-ballast layer establishing a more permeable ballast and overall stronger track structure.

Along with greater operational speed up to 4 mph, the Loram TLU offers a more productive and cost-effective solution for spot and waste-only undercutting compared to conventional undercutting services. The Loram TLU requires only a tamper regulator and ballast cars, which vastly reduces the typical amount of support equipment required. Unlike chain undercutters, the TLU does not need additional equipment to remove ties or ballast in order to cut in. Loram's patented, twin rotary undercutting wheels allow the TLU to quickly cut in and cut out. This feature is beneficial while performing any type of undercutting, but is extremely productive while undercutting multiple mud spots in a day.

While performing undercutting, the TLU raises the track and an undercutting wheel on each side of the track excavates the material on the shoulders and below the crib. The undercut material is then transported via pick-up conveyors on each side of the machine to the waste conveyor that discharges waste up to 35 feet from track center or into a material handling car or dump car.

#### FEATURES AT A GLANCE

- **Lifts track up to 12 in. (300 mm)** per pass allowing creation of a new, more permeable sub-ballast layer
- **Automated, self-supported cut-in** and out without the need for auxiliary equipment
- **Track lifts at up to 4 mph (6.4 km/hr)** for higher levels of productivity
- **One-pass** track lifting from formation to near finished height
- **Vastly reduces tamping needs** for cost-effective drainage maintenance
- **Can operate as part of a ballast train** or independently
- **Rapid 5 – 15 minute set-up or stow time** (based on conditions)

For more information on this machine, or on developing a tailored maintenance program for your railroad, contact Loram at **1-800-328-1466** or visit **LORAM.COM**

# SPECIFICATIONS

## LORAM TLU SERIES TRACK LIFTER UNDERCUTTER

	TLU TRACK LIFTER UNDERCUTTER
Length <sup>1</sup>	89 ft (27.1 m)
Width <sup>1</sup>	9.7 ft (2.9 m)
Height <sup>1</sup>	12.5 ft (3.8 m)
Weight <sup>1</sup>	190,000 lbs (86,200 kg)
Working Speed	– Undercutting: Up to 2,300 ft/hr (700 m/hr) – Track Lifting: Up to 4 mph (6.4 km/h)
Undercutting Production Rate <sup>2</sup>	1,570 yd <sup>3</sup> /hr (1,200 m <sup>3</sup> /hr)
Max. Undercutting Depth	16 in. (400 mm) from bottom of tie
Digging Width	17 ft (5.2 m)
Min. Undercutting Depth	6 in. (150 mm) from bottom of tie
Max. Track Lifting Height	Up to 12 in. (30 cm) per pass
Material Discharge	Up to 35 ft (11 m) from either side of track center or into an auxiliary car
Travel Speed	– Self-powered: Up to 40 mph (64 km/h) – In train consist: Up to 60 mph (100 km/h)
Gradeability	Up to 4%
Minimum Work Radius	13° curve (130 m radius)
Minimum Travel Radius	17° curve (100 m radius)

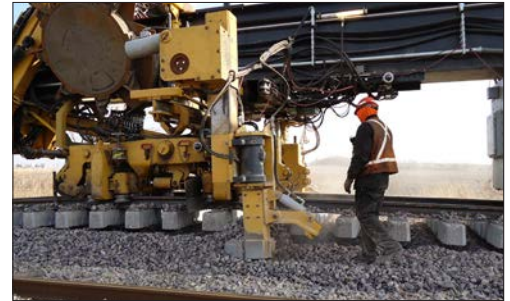
<sup>1</sup> Excluding Auxiliary Cars

<sup>2</sup> Typical; subject to application and material conditions

*Specifications subject to change*

### TLU Series Additional Features & Benefits:

- Higher working speeds than other equipment means greater productivity
- Operation speed is unaffected by jointed rail or welded joints
- Two powered bogies under the power unit
- Seats up to three highly-trained maintenance personnel in the climate-controlled cab
- 1,300 gallons (4,921 L) of fuel on-board offering maximum efficiency and on-track time
- Track alignment tolerances +/- 2 in. (5 cm)
- Capable of pulling up to 4 fully loaded 120 ton ballast cars
- AAR 400 & 401 compliant



### Reliable Service and Support.

With a 60-year plus legacy of serving the railroad industry with the most advanced technologies, the most reliable and productive maintenance of way equipment and world-class contract service work, Loram brings its partnership approach to every customer relationship. This includes an extensive training and technical support program with every machine. Whether for a heavy haul, high-speed, underground or metro-rail system, Loram has the equipment and services you need.

For more information on this machine, or on developing a tailored maintenance program for your railroad, contact Loram at **1-800-328-1466** or visit **LORAM.COM**

**LORAM**<sup>®</sup>

1-800-328-1466 | LORAM.COM | SALES@LORAM.COM

3900 ARROWHEAD DRIVE | HAMEL, MN 55340 USA | TEL 763-478-6014