

LORAM[®]

WHEEL DETECTOR WDS2™



Wheel Detection System

Speed, Performance, Reliability

Loram's **WDS2™** is an economical, yet rugged, wheel detection system suitable for freight rail applications.

How it Works.

WDS2™ is mounted to the location of your choice by positioning clamps on the sides and below the selected rail. The **WDS2™** has an adjustable sensing range, with the ability to decrease sensitivity below the maximum sensing distance (1.89"). Unlike competitors' wheel detectors, Loram's **WDS2™** is polarity sensitive. Radio Frequency Immunity (RFI) sensitivity, and any metal background influence are adjustable through the potentiometer.

Benefits.

- Large vertical sensing range (up to 2"), making only an approximate height adjustment required
- Sensor shield protects from any possible impact of a dragging machine
- Senses wheel speeds up to 80 mph
- No rail drilling required for installation and / or removal
- Works on various rail weights

Installation, Maintenance, and Performance

WDS2™ is simple to install and maintain. It can be installed in a few hours. All-weather cable is available in custom lengths to suit your needs, and exits from the bottom to avoid any potential of snagging.

WDS2™ offers a consistent all-weather operation from 158° F to minus 40° F, and works on various rail weights. Designed for impact resistance with heavy-duty CNC rail clamps, rugged aluminum mounting brackets, and a sensor shield, Loram's **WDS2™** sensor is suitable for all your demanding rail applications.

Reliable Service and Support.

With more than 30 years of helping railroads extend rail life through rail grinding, Loram has now added the most advanced friction modification systems in the industry to our product offerings. Extend the life of your rail assets, select Loram's Maintenance of Way Products.

For more information visit www.loram.com or call your local Loram Regional Manager.

Specifications

WHEEL DETECTOR WDS2™

Sensing Range:
0.94 - 1.89 inches
Temperature Range:
-40° F to +158° F
Enclosure Rating:
NEMA Type 4, IEC Type IP67
Vibration Resistance:
25 G, amplitude ± .08 in., f = 10 - 55 Hz
Shock Resistance:
25 G for 11 ms
Standard Target Size (Mild Steel):
4.7 x 4.7 inches
Differential:
Maximum 20%
Repeatability:
Maximum 5%
Repeatability:
2 wire #18 AWG SJOOW

Subject to change

Wheel Detector WDS2™ may show instability if used in areas with EMF caused by AC currents.



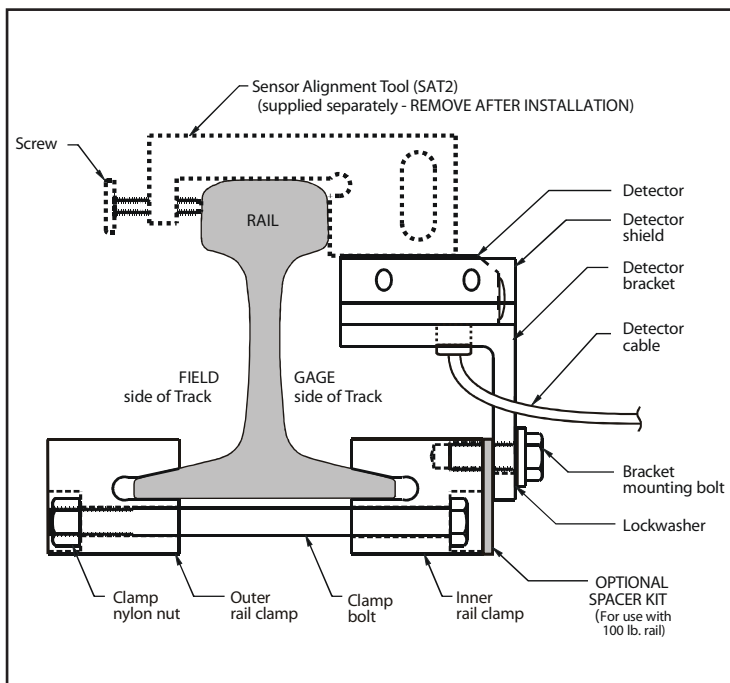
Wheel Detection System



Wheel Detector WDS2™ Sensor Kit



Alignment Tool (Available Separately)



LORAM

Speed, Performance, and Reliability

Loram Maintenance of Way, Inc.
 3900 Arrowhead Drive
 Hamel, Minnesota 55340 USA
 Tel. (763) 478-6014 (800) 328-1466
 Fax (763) 478-2221
www.loram.com
sales@loram.com